



Reflections

Reflections

is published quarterly by:
Willow Brook
Christian Communities
Editor: Teri Ryan

Send change of address to:
100 Willow Brook Way S.
Delaware, Ohio 43015

Address service requested

*If you wish to remove your
name from the Reflections
mailing list, please contact
Lynn Zizzo at 740-369-0048.*

Nonprofit organization
U.S. postage paid
Permit #102
Delaware, Ohio



REFLECTIONS

SPRING/SUMMER
2006
Volume 28 Number 1



**Willow Brook
Christian Communities**
100 Willow Brook Way South
Delaware, Ohio 43015
Phone: (740) 369-0048

Delaware, Ohio

**Willow Brook
Christian Village**
100 Willow Brook Way South
Delaware, Ohio 43015

- Independent Homes & Apartments
- The Centrum Assisted Living
- Passages Alzheimer's Care
- Cherith Skilled Nursing Care & Rehabilitation Center
- Heritage Day Health Center Adult Day Care
- The Courtyard Restaurant

**Willow Brook
Christian Village
at Delaware Run**
25 Delaware Crossing East
Delaware, Ohio 43015
740-201-5640

Twin-single Homes & Apartments

Worthington, Ohio

**Willow Brook
Christian Home**
55 Lazelle Road
Columbus, Ohio 43235
614-885-3300

- Skilled Nursing & Rehabilitation
- Assisted Living
- The Grapevine Grill

www.willow-brook.org

Delaware Run Welcomes First Residents



John Vance became the first resident of Delaware Run on May 15, when he greeted the van carrying his possessions. Neighbors are arriving throughout the summer.

The very first residents have moved into their newly-completed homes along the hills and ridges of the creek called Delaware Run.

A dream several years in the making has come to fruition for nearly 50 individuals or couples, many of whom have made it a habit over the past several months to drive by on Delaware's West William Street to assess the progress of their new homes.

Over the winter and spring we rejoiced with every new landmark; cleared land, basements dug, roofs, then shingles and siding, shutters and trim, charming street lamps, trees, landscaping, street blacktopping and the gracious brick and stone entry have each been celebrated as they appeared.

CEO Larry Harris says the completions will snake across Delaware Run just as the construction phases before them, and he expects every home to be ready before summer's end. Then come the apartments!

19th Annual Roy and Eunice Rogers Golf Scramble

\$65 per Individual
\$100 per Corporate Individual

**Package includes:
Green fees, cart, lunch,
prizes, dinner, and
fellowship**

**Saturday,
July 29, 2006**

Willow Run Golf Course
State Route 310 & Route 161
Alexandria, Ohio
Double Shotgun Start

Roy and Eunice Rogers Golf Scramble Registration

Name: _____

Address: _____

City: _____ State: _____ Zip: _____

Names of other players:

Return form with payment to: **Willow Brook Christian Communities**
100 Willow Brook Way South
Delaware, Ohio 43015
Attn: Lynn Zizzo

Borrowed Time

by Larry Harris, CEO

One evening in March as *American Idol* was just fading from the TV screen in my family room, Janet reached for the phone to begin her ritual voting, when it rang, right in her hand. The caller ID read “Aspen Valley Hospital.” By the time she lifted the receiver to her ear, her hand was trembling.

Our youngest son, Stephen, age 21, was on a spring break skiing trip with friends in Aspen, Colorado. “Mrs, Harris?” the voice quizzed, “Your son was involved in a ski accident. We have him here, and he’s hurt pretty bad. His injuries are more than we can handle, so we’re flying him to Denver.”

He had missed a turn on the slope and smacked a tree dead-on full bore – in the style of Sonny Bono and Michael Kennedy. His pelvis was shattered. The Aspen doctor said it looked as if Mark McGwire had taken a warm-up swing on his right hip.

Janet and I dropped everything and booked the next flight west.

We crossed the Mississippi at 35,000 feet as an air ambulance was ferrying our boy down from the mountains to a specialty hospital in Denver. We found him on the orthopedic unit, lying still and silent. His injuries were severe, and the morphine was working imperfectly. Frankenstein bolts protruded above his right knee to anchor a tortuous traction line that looked as if it had been thought up in the Inquisition. For six days, he lay flat, biding time till surgery.

Waiting at his side, it was hard for Janet and me to watch him suffer so, but I remember whispering a prayer of thanksgiving to be sitting in a Colorado hospital room and not a funeral home.

His room was on the fourth floor overlooking a lake, with the Rockies off a distance beyond. Each evening we were presented the gift of a riotous sunset over the ridge. Had we been there

for most any other reason, we actually would have enjoyed the show.

A wing of the hospital jutted out perpendicular just to the right of his window, and we had VIP eyelevel seating for the heliport on the wing’s rooftop. Day and night they came. We would hear a distant whoop-whoop-whoop that signaled the approach of another helicopter delivering its mangled human cargo from a ski resort or highway

crash site. We would watch each chopper glide in gracefully and hover just feet above the roof, as if getting its bearings, then maneuver down a bit awkwardly to the pad. With rotors still turning, hunched nurses and doctors would rush out M*A*S*H-like to off-load a gurney with dangling IV and oxygen lines.

Stephen had arrived by that venue. I wonder who was watching from the windows as the nurse angels silently whisked him from his helicopter to the elevator.

It is all quite an enterprise, this Colorado ski-accident industry. My cynical side leads me to question if the air ambulance compa-

nies aren’t in cahoots with the trauma hospitals, the orthopedic surgeons, and physical therapists. I can see them taking out ads in the ski magazines (“Come ski in scenic Colorado...”), knowing that “x” percent will wind up on their assembly line. (Oh, c’mon, I’m jesting here.) But it is all a well-oiled machine, and I am thankful that they cranked it up to care for my son at his time of need.

With all the pain and anxious moments, there has come one blessing out of all this: Our boy has been returned home again to Janet and me as we provide his care. We have never celebrated when one of our kids has moved out to live on their own, as Stephen did some time back. It has always been a day of mourning. This spring, if only until he is able to walk, he is with us again.

When I think of how close we came to losing him, I now prize each minute he is within our sphere. Janet and I feel we are on borrowed time with him. Life can turn on a dime, and we accept his accident as a stern reminder that this world holds no guarantees. The people, things, and places we hold so dear can be snatched away in a heartbeat.

“... I remember whispering a prayer of thanksgiving to be sitting in a Colorado hospital room and not a funeral home.”



Larry Harris, CEO
Willow Brook
Christian Communities
Contact Larry on-line at
larryharris@willow-brook.org



Home activities assistant Christy Brice and resident Janet Davies enjoy a chuckle over a book.

Brice, Needels go Second Mile

The 2005 Second Mile Award has been presented to Christy Brice, at Willow Brook Christian Home and Willow Brook Christian Village’s Linda Needels. Christy has been on the Home’s staff since 1997, serving first as a nursing assistant and now working in the activities department. Linda has been a nurse at The Centrum assisted living since 1996.



Linda Needels, LPN, helps patch up Freda Thatcher’s finger

“Both are givers,” says CEO Larry Harris, “and they love the residents.” The Second Mile Award is presented to one staff member from each of the Willow Brook campuses annually. Residents, family members and co-workers nominate individuals in recognition of exceptional service to residents, selfless dedication to the principles of Willow Brook, and a willingness to go the “second mile.”

Reppart “Retires”

Helen Reppart has retired. Known as “Mama R” to students at York College in Nebraska, Helen has until now been our only manager at Willow Brook Christian Village since it opened 16 years ago.

Her contributions to independent senior living were recognized on a national level in 2000, when Helen received the Ira A. Mackie Housing Excellence Award, an honor bestowed annually by the Pruett Gerontology Center at Abilene Christian University for “outstanding service to the elder housing industry among Churches of Christ.” Helen is equally proud of the friendships she helped to create at the Village, and is looking forward to having time to enjoy them more as a retired resident living at Willow Brook Christian Village.

But anyone who knows Helen knows she is far from a retiring person, and she promises to continue representing Willow Brook as a volunteer in the Willow Brook booth at the Delaware County Fair.





Delaware Run resident and donor Don Davis, left, and director of maintenance Bob Wheeler share their pride in the truck Davis purchased for Willow Brook at Delaware Run.

Gift to Delaware Run Follows Lifelong Love

Don Davis loves trucks. Always did. “I’ve been interested in equipment since I was young,” he states. At one time this Delaware Run resident had a small contracting business, and he also sold toy trucks and tractors at shows. “I even built a tractor,” he continues, “starting with a 1934 Ford V-8. I shortened the frame, put in two transmissions, and got a lot of power. I had fun with it.”

It was probably Don’s interest in equipment that led him to see the need for a versatile vehicle at the newly-opened Delaware Run, when he and his wife, Melba, moved in last month. He talked to director of maintenance Bob Wheeler about what the truck needed to do, and together they decided on a small, versatile truck that would be adaptable for landscaping, plowing snow and any other chores that might arise.

Then Davis bought it for us.

“I told Bobby that I have only one condition: let me drive it once in a while.”

We’re truly grateful, and are quite sure that can be arranged.



Polly and Jim Kossow unveil a plaque honoring her parents at Willow Brook Christian Home.

Williamsons Memorialized

Harry and Mary Williamson were residents of two Willow Brook care centers several years ago, Harry at Willow Brook Christian Home, and Mary at The Village.

Their daughter and her husband, Polly and Jim Kossow, treasured the relationships that had grown over the years, and continue to volunteer at Willow Brook to this day.

Now they have taken their generosity a step further by making a generous gift to the Building for the Future Campaign in her parents’ names.

This month they attended a luncheon in their honor, at which time a plaque naming room 122 the Harry and Mary Williamson Room was unveiled.

Delaware Run Rally

Thursday, September 28

Watch our web site for more information

www.willow-brook.org

Diroff, Omameh receive Hospice Awards

Cherith Care Center’s Connie Diroff and Willow Brook Christian Home’s Elizabeth Omameh were presented with Compassionate Care Awards from HomeReach Hospice last month.

“Connie checks in on one of our hospice residents 3-4 times a day to see if she is doing OK and to see if there is anything she needs,” says HomeReach social worker Debbie Bush, who nominated Diroff for the award. “The residents identified Connie as one of the most helpful staff members making her life a little brighter.”

“Elizabeth is always smiling, to the hospice staff and to the residents and families,” according to the hospice’s nominating nurse Mary Vacca. “She is always willing to help the residents and the hospice aide. She really cares about others. Thank you, Elizabeth, for giving compassionate care.”

The Compassionate Care Award is presented during National Nursing Home Week to recognize exceptional advocates for the residents. “The hospice team considers it a privilege to work with these Compassionate Care providers,” says HomeReach Hospice’s Jackie Langley, “and highly values their partnership in end-of-life comfort care.”

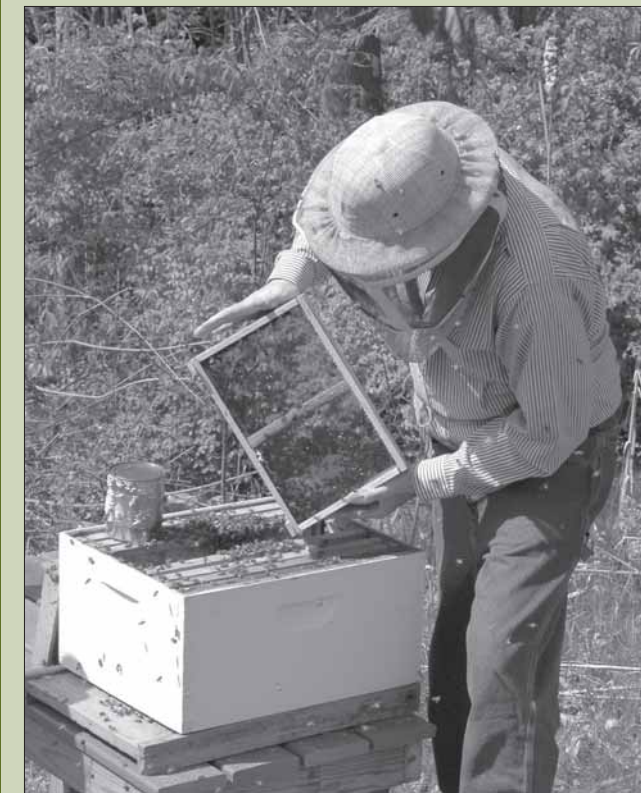


Nursing assistant and Compassionate Care Award winner Elizabeth Omameh with HomeReach Hospice’s Jackie Langley.



Housekeeper Connie Diroff receives a congratulatory hug from her boss, Village Director of Housekeeping Nancy Jenkins.

A Honey of a Project



Beekeeper and Church of Christ minister Keith Ball recently introduced honeybees to Willow Brook Christian Village’s natural area. The three-pound package of three-band bees can be expected to keep Willow Brook in honey, as long as we keep the bees in clover!

The Parable of the Starfish

As an old man walked along the beach at dawn, he noticed a young man ahead of him picking up starfish and gently throwing them into the sea. Finally catching up to the youth, he asked why he was doing this. The answer was that the stranded starfish would die if left until the morning sun.

“But the beach goes on for miles and there are thousands of starfish,” countered the old man. “How can your effort make any difference?”

The young man looked at the starfish in his hand and threw it safely to the waves. “It made a difference to that one.”

There is something very special in each and every one of us. We have all been gifted with the ability to make a difference.

Many of our loyal and generous Willow Brook donors are aware of that special gift, that we gain through the strength of our visions to power the shape of our mission . . . ***“to enable older adults to live to their fullest potential by providing housing, facilities, and services, delivered with compassion and love . . .”***

We must each find our starfish.

Thank you again for investing your “stars” wisely and well, and for making Willow Brook a better place to live. It is all about making a difference, no matter how small!

Last year over 480 loyal “stars” (donors) made a difference by giving over \$170,000 for a variety of programs and special projects at both the Home and at the Village. Thank you so much for sharing your philanthropic “Starfish” with both our residents and staff. In the box at right we list some of *your* highlights for 2005.

by Jim Minehart
Chief Development Officer

Development Highlights 2005

- Current and former board members gave \$11,447
- 49 generous employees took an extra step and gave over \$15,500
- Almost \$23,000 was given by Churches of Christ
- 520 restricted gifts, such as those earmarked for the employee tuition reimbursement program, totaled \$32,340
- The Roy and Eunice Rogers Golf Scramble generated over \$9,000 (net) for resident care
- Our grateful residents and their families gave generously, in excess of \$46,000
- 13 gifts-in-kind were valued at \$10,895
- The *memorial* and *tribute* programs recorded 291 gifts for \$17,537

The development department values both your loyalty and your generosity as a donor to our mission at Willow Brook Christian Communities. You may have noticed that we did not include the listing of donors in this issue of *Reflections*. Over the years the number of donors has grown considerably. We value your investment and trust that the financial savings of leaving the list out of the newsletter is meaningful to you as well. If you would like to have a copy of the donor listing for 2005, please contact Lynn Zizzo at the development office, 740-369-0048.

Save the Date . . .

Senior Sharing Time

Love – Joy – Peace

Join Christian seniors for a day of spiritual nourishment at the annual Senior Sharing Time on

Tuesday, October 10, 2006
9:00 am - 2:00 pm

Terrace Room
Willow Brook Christian Village
100 Willow Brook Way South
Delaware, OH 43015

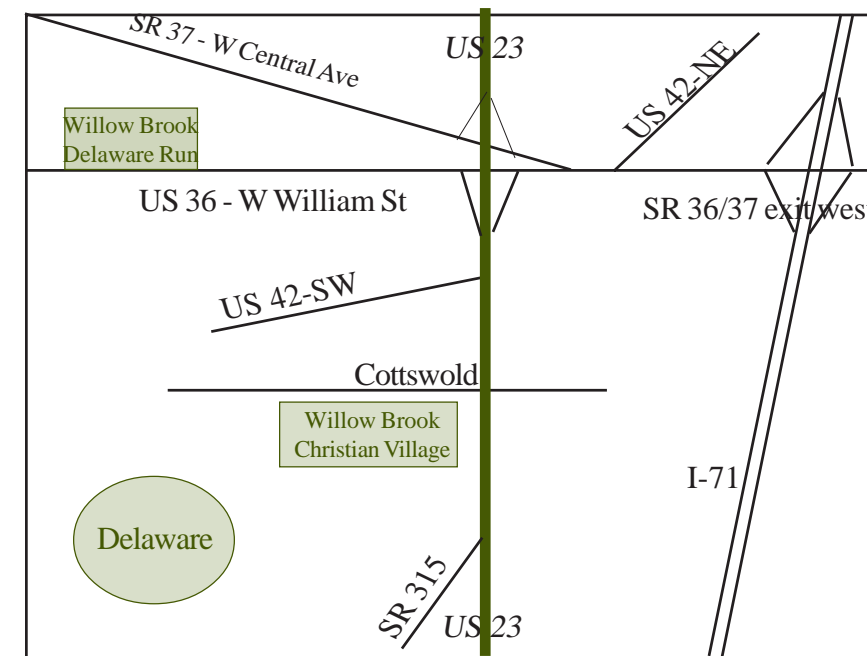
Speaker topics:

A Loving Touch	John 13:14-17
Candles of Encouragement	
	Romans 12:6
The Peacemaker's Gift	John 14:27

Our AOPHA Stars



Every year the Association of Philanthropic Homes, Housing, and Services for the Aged, or AOPHA, honors member staffers who are shining stars of loving service in their facilities. Willow Brookers were feted at a luncheon in their honor at the Buckeye Hall of Fame Café in Columbus. They are, from left to right, Claudia Wells, Comfort John, Carl Foster, Linda Patrick, Sue Bilsing, Peggy Phan, and Julie Reed. AOPHA is our state association that advocates for not-for-profit services for older Ohioans, and the selected staff members were nominated by residents and their families. They are our stars!



Come See Us!

The Welcome Center at Delaware Run is open Monday through Saturday from 10:00 a.m. until 6:00 p.m., and on Sunday from 1-5 p.m. Stop by and take a tour. We love to show off our new campus, and we're looking for some special neighbors just like you.

A Gift of Love



Virginia Noe

Virginia Noe and Mary Jean Roach became the 2006 recipients of Willow Brook's highest volunteer honor at the annual appreciation luncheon on April 21, when they were presented with the Gift of Love Award. More than a hundred people attended the event.

Mary Jean has come into Passages, our special wing dedicated to the care of people with Alzheimer's Disease, almost daily for three years to help us minister to their needs by helping feed them and take them on outings. Many consider her a member of their own families.

Virginia is the unofficial hostess of Willow Brook Christian Home. She has shared her considerable professional experience by answering telephones and greeting visitors at the front door, and over the years has become a trusted member of the Home team. And the best part is that she lives just down the hall!



Mary Jean Roach, above, receives her Gift of Love Award from Village activities director Marlene Andersen

Going to the Dogs



Elsie Mattingly greets Spot, a great dane brought to Willow Brook Christian Home by volunteer Kim Boehm in celebration of the Chinese Year of the Dog.

The Village Square Apartments at Delaware Run

First residents are moving into twin-single homes right now at our new retirement community, Willow Brook at Delaware Run. Things are coming together beautifully. Landscaping is basically finished around the homes near the entrance as we transform the old Carson farm into a gorgeous neighborhood. Drive by on West William Street in Delaware, Ohio, and see the progress.

People will be moving in throughout the summer and fall. In no time Delaware Run will be cranked and humming. With this first phase wrapping up, the development team now is turning its attention to the construction of the apartments and healthcare center for this 49-acre campus.

Many of the apartments already are spoken for, and we are close to meeting the "critical mass" needed to obtain financing. If you have been considering an apartment but haven't signed up yet, come in and let's talk. It could be the best move of your life, and you'll be helping "the cause." Call Carol Calkins at 740-201-5640 to set an appointment for a tour.



The octagonal Water's Edge Restaurant hovers over the lake in a rear view of the Village Square apartments in this architectural rendering. An outdoor eating deck will almost completely surround the restaurant and afford diners the opportunity to view the natural woods and green spaces that are a hallmark feature of Willow Brook's communities.



Why an apartment at Delaware Run?

- Lots of space (they're bigger than you think, and all the common spaces are yours, just down the hall)
- Who cares about the weather? (indoor walk to the restaurant, activities, and healthcare center)
- Full kitchen/laundry in your apartment
- Great views overlooking the lake and trees
- 24-hour staff/24-hour emergency call
- Lock it and leave it – let us worry about security
- Lots of people around (conversations, activities, fellowship)
- Underground parking (elevators will whisk you right up to your floor)
- Pets are welcome (within reason, of course)
- Your own private patio or balcony off your living or dining room
- Quiet (special sound-proofing techniques between apartments – so quiet you'll wonder where everyone is)
- Fire-safe construction (concrete/steel, fire sprinklers, fire/smoke alarms monitored 24 hours a day)
- Same financial plan as a twin (entrance fee with 75% refund)

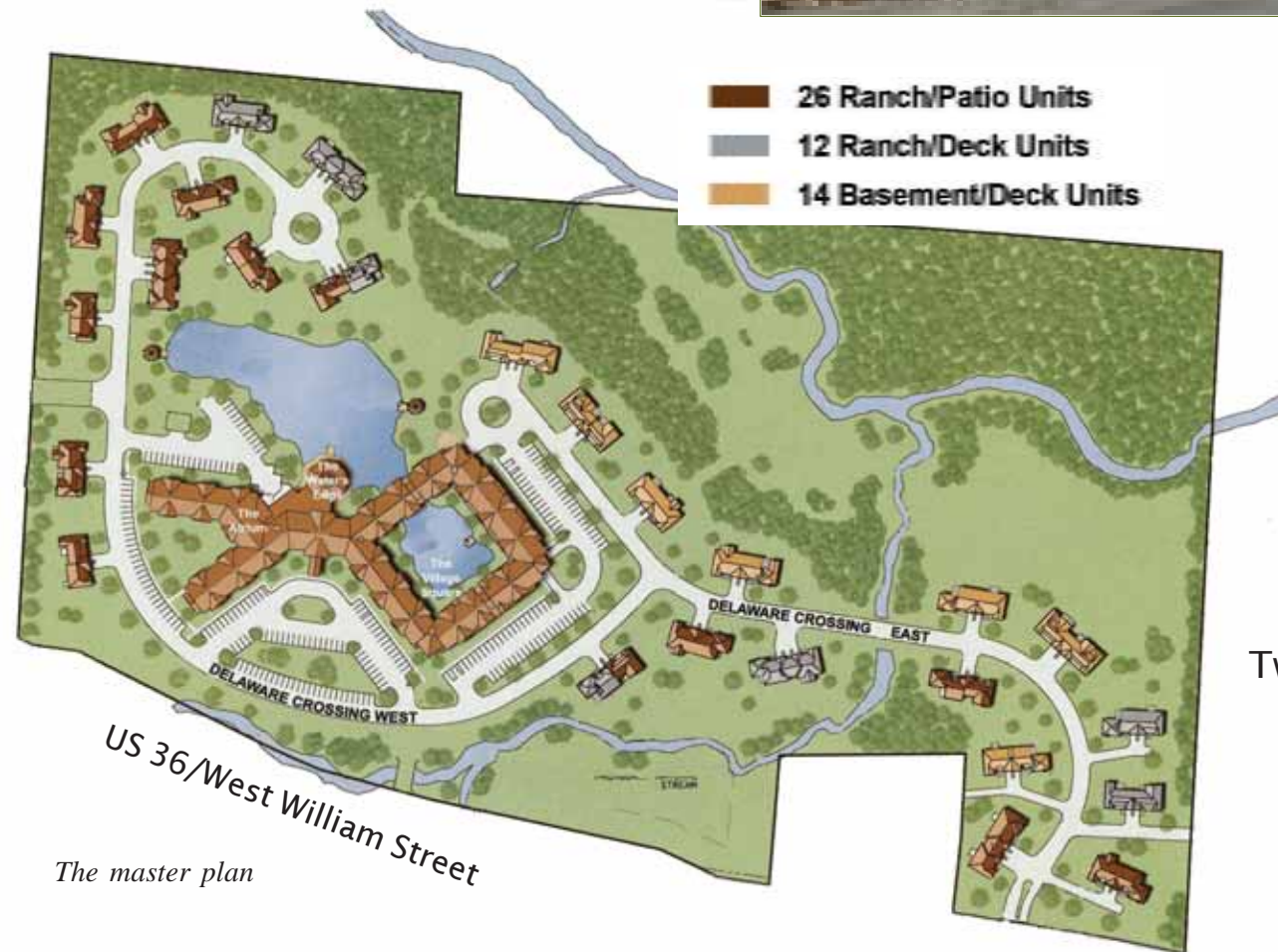


The main entrance

- Pond, streams & walking paths
- “The Water’s Edge” Restaurant
- Underground parking garage
- Spacious lounge, meeting spaces
- Fitness & art centers



49-acre retirement community
52 Twin-Single Homes
87 Apartments
77 Assisted Living Units



The master plan



Entrance to the campus center and apartments



Twin-single homes

25 Delaware Crossing East
 North side of Rt 36/West William Street
 Two miles west of downtown Delaware, Ohio

Welcome Center open daily

740-201-5640

AT
 DELAWARE
 RUN
Willow Brook

A Willow Brook Christian Community



Village Square Apartments